



# IPA CROSS-BORDER PROGRAMME BULGARIA - SERBIA



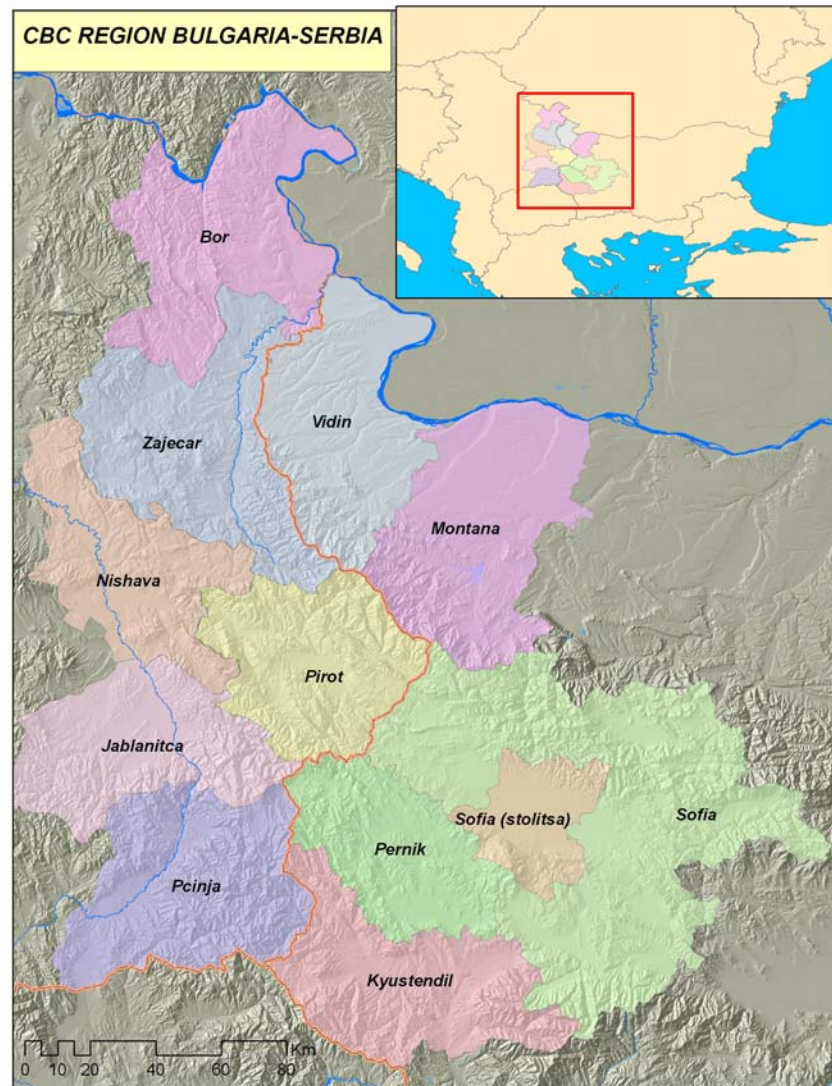
# The Programme



- Territory: 39.434 km<sup>2</sup>
- Population: 3.309.998 people
- Eligible area (NUTS III):

BULGARIA	SERBIA
<b>Vidin District</b> 11 municipalities	<b>Bor District</b> 4 municipalities
<b>Montana District</b> 11 municipalities	<b>Zaječar District</b> 4 municipalities
<b>Sofia District</b> 22 municipalities	<b>Nišava District</b> 11 municipalities
<b>Pernik District</b> 6 municipalities	<b>Pirot District</b> 4 municipalities
<b>Kyustendil District</b> 9 municipalities	<b>Jablanica District</b> 6 municipalities
<b>Sofia-city District</b> 1 municipality*	<b>District Pčinja</b> 7 municipalities

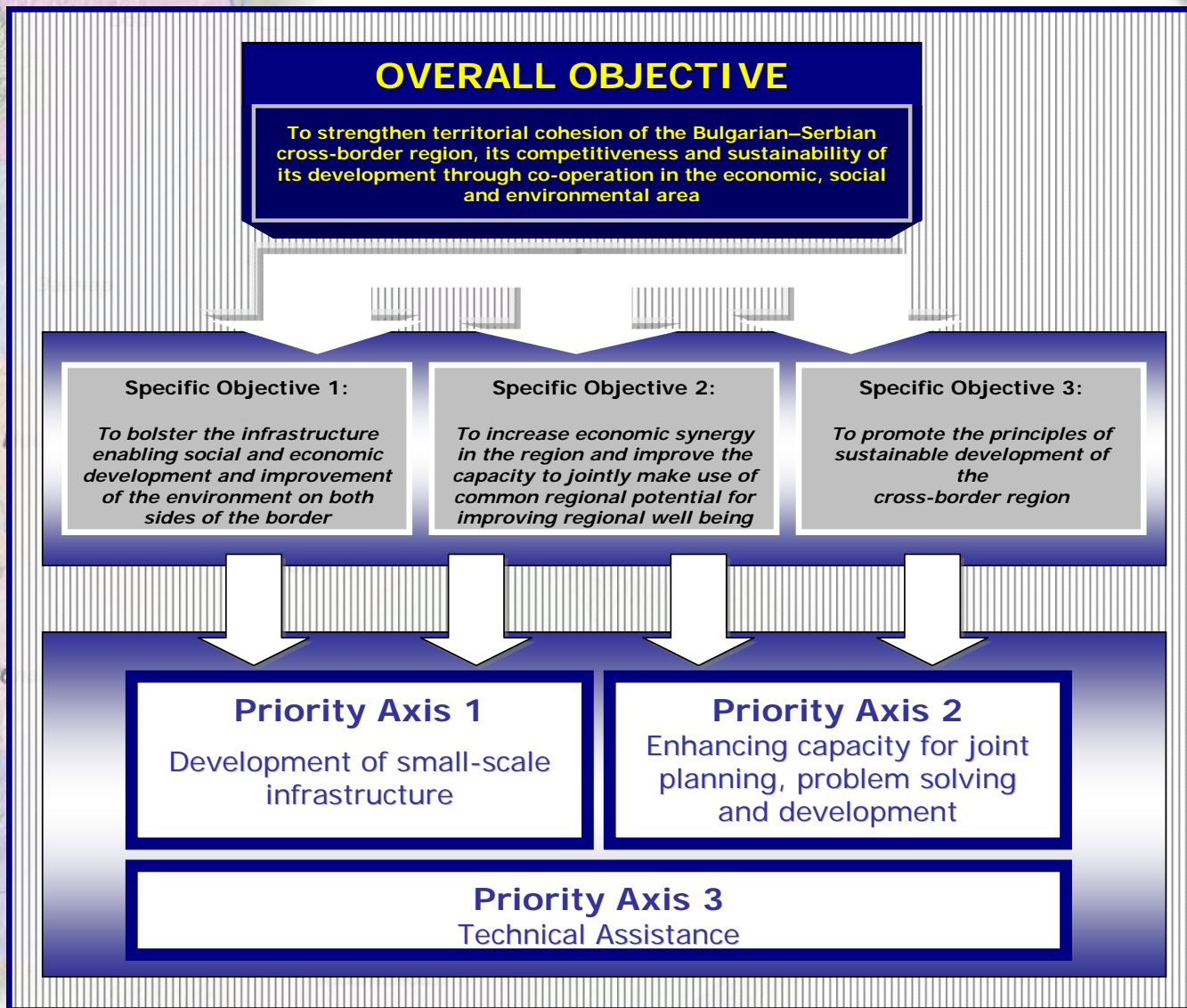
\* The district of Sofia-city defined as adjacent area should implement operations up to 20% of the amount of the Community and national contribution.





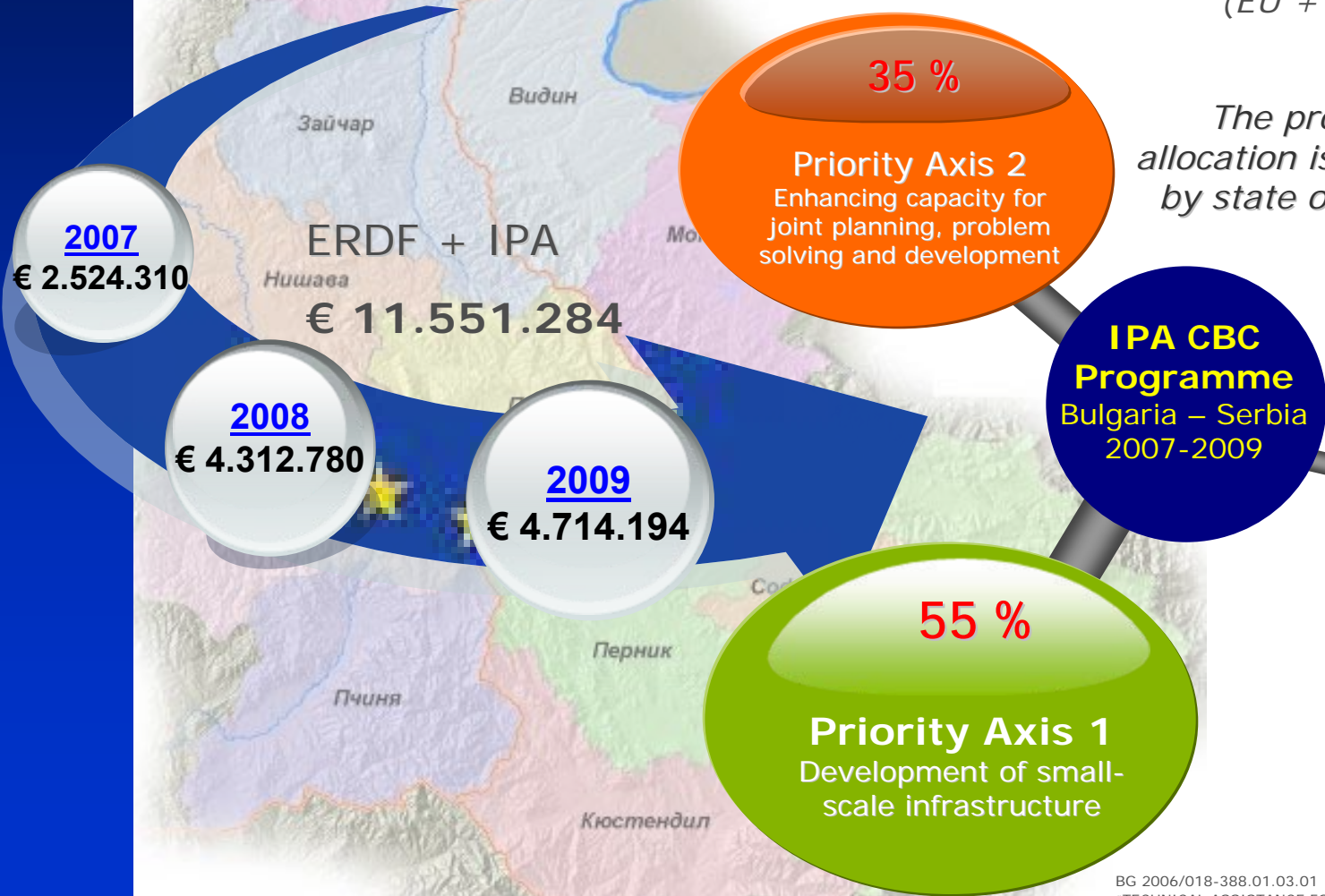


# Strategic Framework





# Budget



TOTAL: € 13.589.746

(EU + National Funding)

*The programme financial allocation is not broken down by state or NUTS III eligible region!*

**IPA CBC Programme**  
Bulgaria – Serbia  
2007-2009



# Priority Axis 1

## Development of small-scale infrastructure



- **The objective** of the priority axis is development of steadfast partnership cooperation within the range of improvement of the cross border infrastructure condition oriented towards spatial integration, better quality of the environment and accessibility, more favorable business environment for new business activities and attractiveness for inhabitants and investors.





# Priority Axis 1

## Development of small-scale infrastructure



- **Measures:**

- **1.1 Physical and information infrastructure**  
**(investment support activities!)**

- *Duration of the action: 6-24 months*
- *Grant requested: EUR 200.000-EUR 600.000*

- **1.2 Infrastructure concerning environmental issues**  
**(investment support activities!)**

- *Duration of the action: 6-24 months*
- *Grant requested: EUR 200.000-EUR 600.000*

- **1.3 Assistance for project preparation**  
**(soft measures)**

- *Duration of the action: 6-12 months*
- *Grant requested: EUR 10.000-EUR 50.000*



# Priority Axis 1

## Development of small-scale infrastructure



### IMPORTANT:

#### MEASURE 1.1 AND MEASURE 1.2

(investment support activities!)

- Expenditures for **investment support activities** must form at least 70 % of total eligible costs!
- All envisaged investment activities have to be supported with **detailed works design** (where applicable according to the relevant legislation)!
- Two-phase projects are not eligible!
- All investment activities should be implemented on a **public municipal** or **public state-owned property!**
- All the investment proposals should have **positive environmental impact assessment (EIA)**, if for such kind of activities an EIA is required by the national legislation!
- Make sure that all investments (e.g. infrastructure works) be carried out in compliance with the relevant Community environmental legislation.
- If a project is likely to affect sites of nature conservation importance, an appropriate **nature conservation assessment** shall be made!





# Priority Axis 1

## Development of small-scale infrastructure

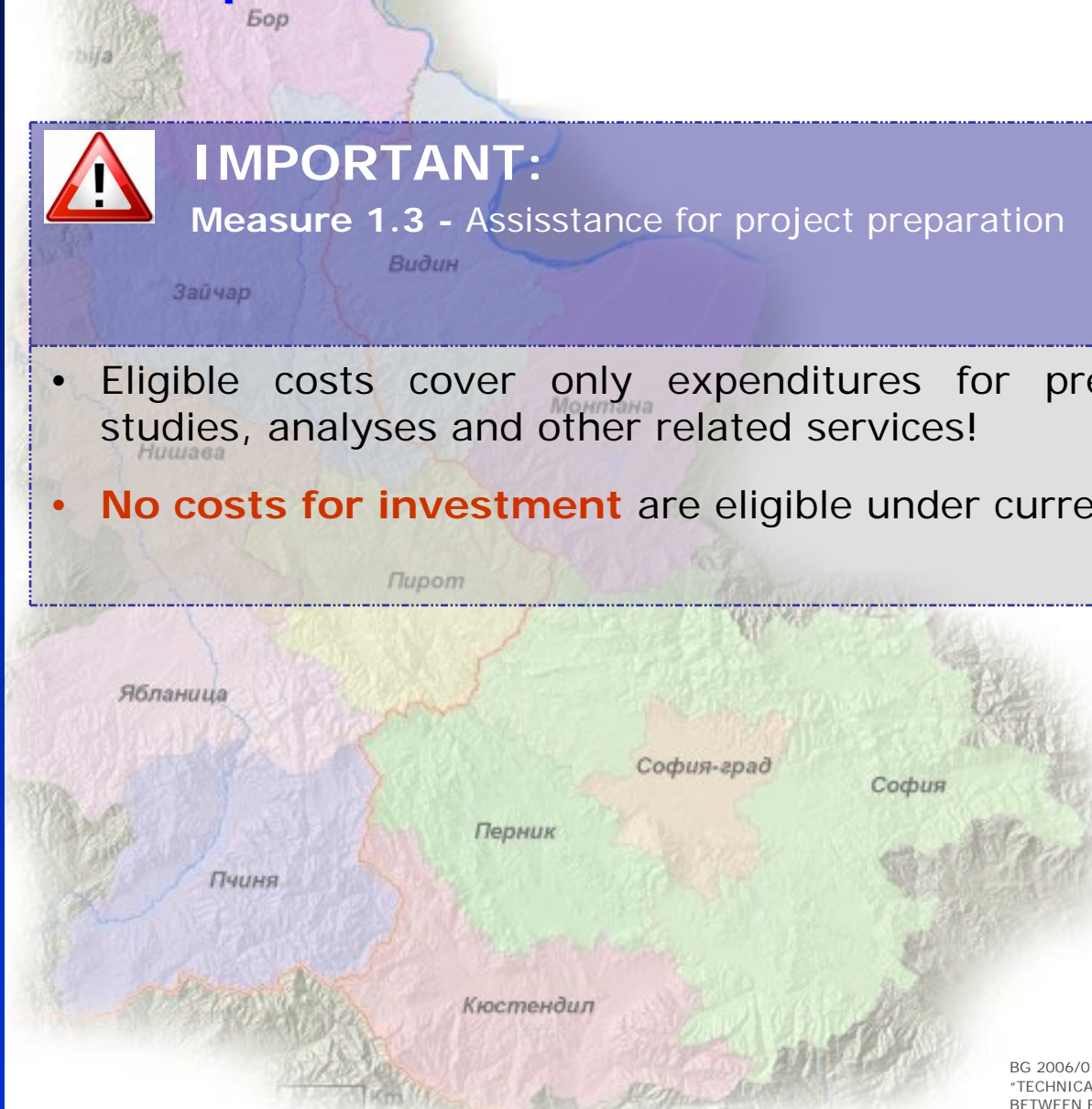


### IMPORTANT:

Measure 1.3 - Assistance for project preparation

("soft" measures!)

- Eligible costs cover only expenditures for preparation of feasibility studies, analyses and other related services!
- **No costs for investment** are eligible under current intervention 1.3!







# Priority Axis 2

Enhancing capacity for joint planning,  
problem solving and development



- **The objective** of this priority axis is to improve the capacity of the region to deal with regional issues as: identification of problems and tracks for solutions, partnership establishment, strengthening of institutional and business structures to respond to market requirements, establishment of models for cooperation based on best practices and common needs.





# Priority Axis 2

## Enhancing capacity for joint planning, problem solving and development



- **Measures:**

- **2.1 Links and networking on institutional, business and educational levels (institutional buildings (IB) support activities "soft" measures!)**

- *Duration of the action: 6-12 months*

- *Grant requested: EUR 10.000-EUR 200.000*

- **2.2 Sustainable development through efficient utilization of regional resources (institutional buildings (IB) support activities "soft" measures!)**

- *Duration of the action: 6-12 months*

- *Grant requested: EUR 10.000-EUR 200.000*

- **2.3 People to people actions (joint small projects!)**

- *Duration of the action: 6-12 months*

- *Grant requested: EUR 10.000-EUR 100.000*





# Priority Axis 2

## Enhancing capacity for joint planning, problem solving and development



### IMPORTANT:

Measure 2.1 and Measure 2.2

**(institutional building (IB) support activities - "soft" measures!)**

- Under this intervention **only institutional building (IB)** support activities are eligible for financing!
- In case expenditures for **investment support** activities are envisaged (only supply), such expenditure **must not exceed 20 % of total eligible costs!**
- Eligible expenditures for **investment activities must cover only purchase of small equipment items and small supplies**, if these form an integral part of the project.
- In addition either PCs or laptops can be procured under supplies, while the procurement of laptops should be properly justified for the purpose of the specific activity and will be eligible only if such have not already been procured under other PHARE/CARDS – funded projects. However these costs must not exceed 20% of the total eligible costs.



# Priority Axis 2

## Enhancing capacity for joint planning, problem solving and development



### IMPORTANT:

Measure 2.3 - People to people actions

(joint small projects!)

- Under this intervention **only joint small project activities** are eligible for financing.
- Eligible expenditure for **investment activities must cover only purchase of small equipment items and small supplies**, if these form an integral part of the project.
- In addition either PCs or laptops can be procured under supplies, while the procurement of laptops should be properly justified for the purpose of the specific activity and will be eligible only if such have not already been procured under other PHARE/CARDS – funded projects.
- However any **investment costs must not exceed 20%** of the total grant amount.





# Beneficiaries



- Local/regional/national authorities or subsidiary structure(s) of local/regional/national authorities
- National and regional agencies (responsible at central, regional and municipal level)
- Nature park administrations
- Local/regional forestry directorates
- Health care institutions
- Cultural institutions
- Community centres
- Regional employment agencies
- Non-governmental or non-profit organizations – e.g. business support organizations, local enterprise agencies, development agencies, Chambers of Commerce (CoCs), Information and Communication Technology (ICT) development agencies, educational, training and Research and Development (R&D) institutions, employers and producer associations, trade unions; other state and public agencies and associations
- Educational institutions such as universities, schools, colleges and libraries
- Euro regions



# Priority Axis 3

## Technical Assistance



- The **objective** of this Priority axis is to provide effective and efficient administration and implementation of the Programme.
- The following **measures** are envisaged:
  - *Overall administration and evaluation of the Programme*
  - *Publicity and communication*
- **Main target groups:**
  - *Programme Managing Authority (MRDPW)*
  - *Serbian National Authority (Ministry of Finance)*
  - *Joint Programme Monitoring Committee*
  - *Joint Technical Secretariat*
  - *Audit Authority*
  - *Certifying Authority*
  - *Assessors and controllers*
  - *All other structures/bodies related to development and implementation of the Programme*
  - *Consultancy companies*
  - *Programme beneficiaries*





# Guiding Principles of Implementation



- Sustainable Development
- Equal opportunities
- Cross-border partnership





# Cooperation criteria

- The projects must have **direct CBC impact**, which shall be understood in terms of respecting at least one of the following conditions:

– *Joint development*

– *Joint implementation*

– *Joint staffing*

– *Joint financing*





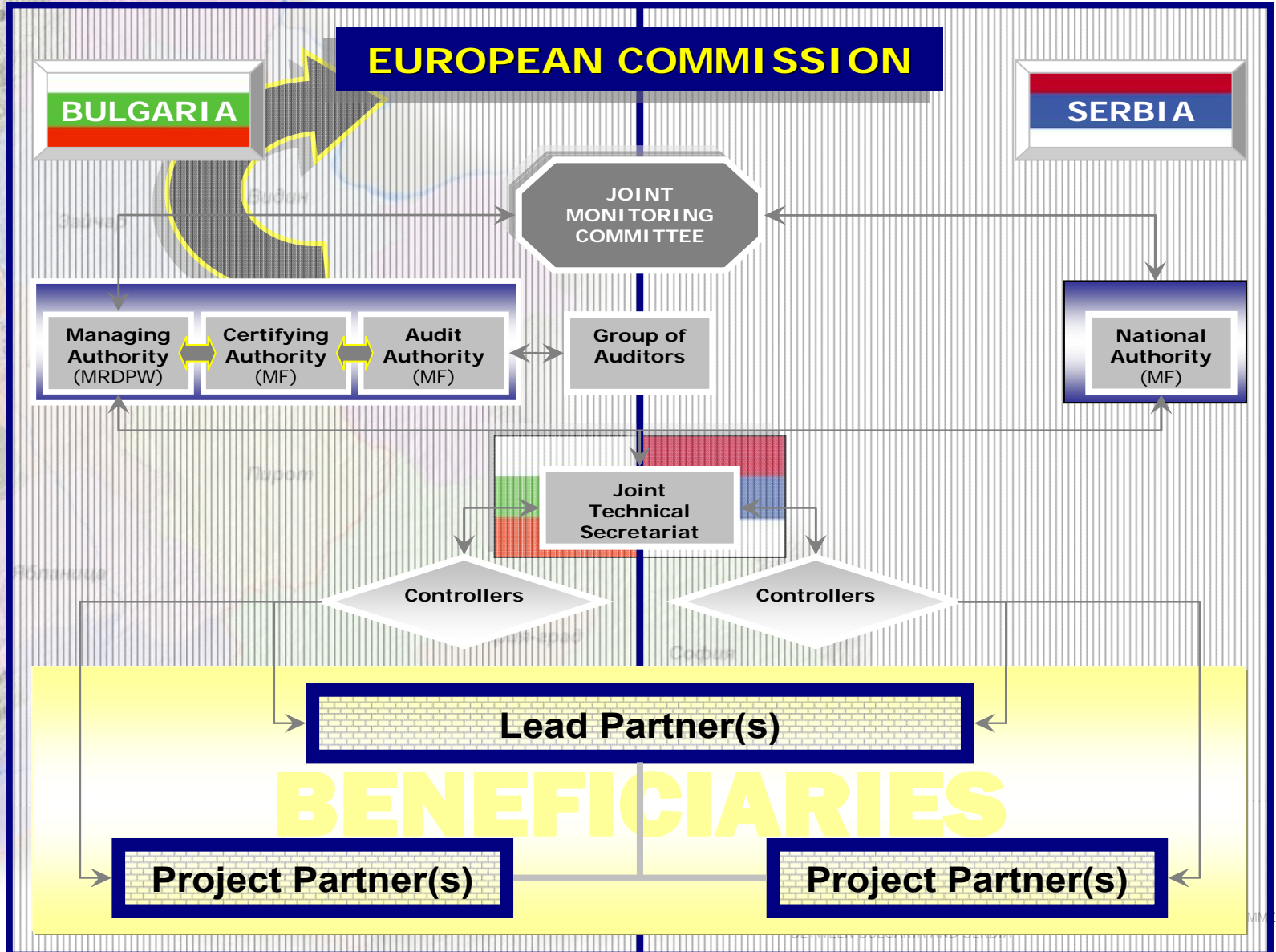
# Partnership



- Project proposal preparation requires **cooperation between partners.**
- **IPA Implementing Regulation 718/2007** postulates the obligatory appointment of lead beneficiary/partner between final beneficiaries.
- The **Lead Partner** is **responsible for the project implementation** (*The Lead Partner submits the project proposal; The Lead Partner signs an agreement with the Managing Authority upon the project proposal approval; The Lead Partner signs the respective agreements with the other partners participating in the project*)
- **However, every partner is completely responsible for their own actions!!!**



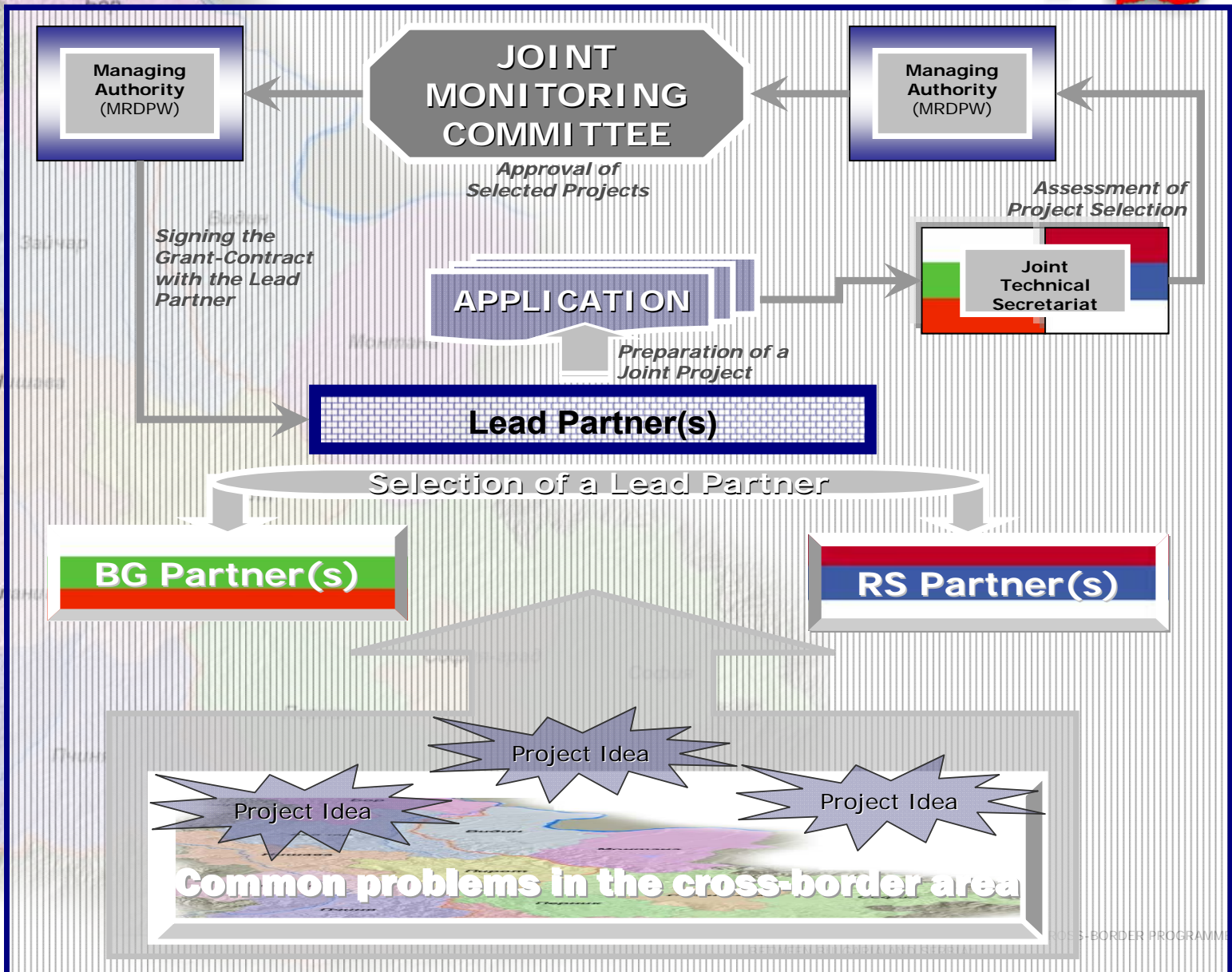
# Management & Implementation Structures





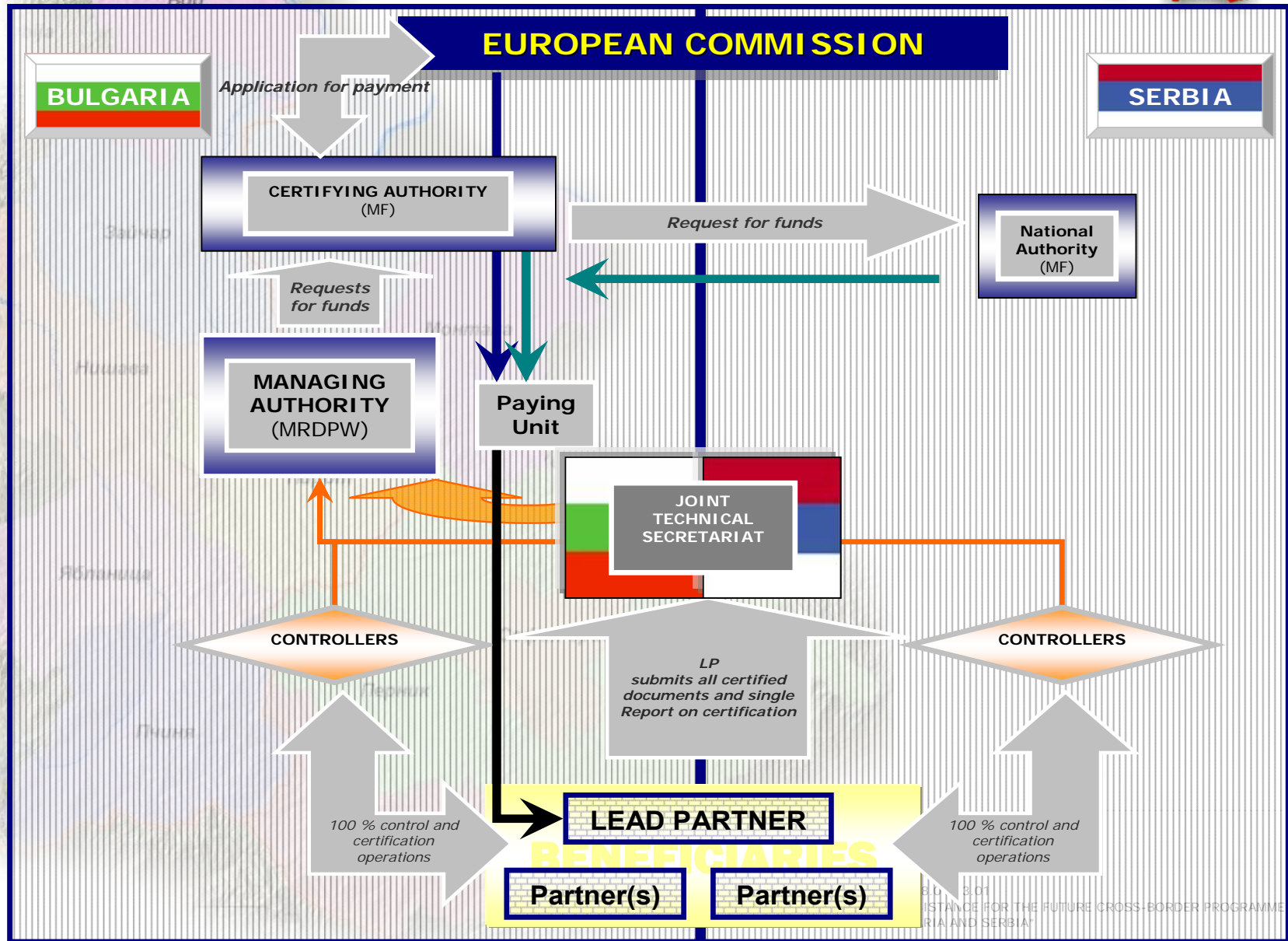


# Identification, Application and Selection Process





# Control and Financial Flow







# Contacts



- The programming document is available on:

[www.ipacbc-bgrs.eu](http://www.ipacbc-bgrs.eu)

[www.bgregio.eu](http://www.bgregio.eu)

[www.evropa.gov.rs](http://www.evropa.gov.rs)

MANAGING AUTHORITY	JTS	NATIONAL AUTHORITY
<p><b>MINISTRY OF REGIONAL DEVELOPMENT AND PUBLIC WORKS (MRDPW)</b>            Republic of Bulgaria            Sofia 1202            17-19, Kiril and Metodii Str.</p> <p>Call centre: +359 2 94059            Phone: +359 2 9405 680            Fax: +359 2 9405 680            E-mail:  <a href="mailto:tcm_exbd@mrrb.government.bg">tcm_exbd@mrrb.government.bg</a></p>	<p><b>MAIN OFFICE</b>            Republic of Bulgaria - MRDPW            1202 Sofia            17-19 Kiril and Metodii str.            Floor 2, Room 2.1            Contact person: Doncho Stoimenov            Phone: +359 2 9405 680            Fax: +359 2 9405 680            E-mail:  <a href="mailto:tcm_exbd@mrrb.government.bg">tcm_exbd@mrrb.government.bg</a></p> <p><b>BRANCH OFFICE</b>            Republic of Serbia            Poslovni Sentar "Ambasador"            18000 Nis            Strahinjica Bana bb            Contact person: Maja Jovanovic            Phone: +381 18 521 677            Fax: +381 18 521 676            E-mail:  <a href="mailto:maja.jovanovic@mfin.gov.rs">maja.jovanovic@mfin.gov.rs</a></p>	<p><b>MINISTRY OF FINANCE</b>            Republic of Serbia            11000 Belgrade            20, Kneza Milosa Street</p> <p>Phone: +381 11 36 42 789            Fax: +381 11 36 12 230            E-mail:  <a href="mailto:kristina.askovic@mfin.gov.rs">kristina.askovic@mfin.gov.rs</a></p>



# IPA CROSS-BORDER PROGRAMME BULGARIA - SERBIA



## **Questions & Answers**